

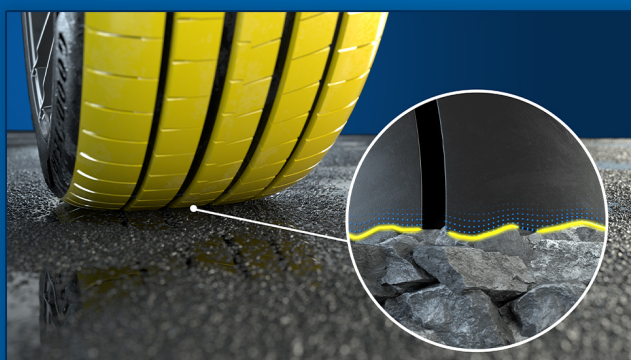
GOODYEAR EAGLE F1 ASYMMETRIC 6

READY FOR ANYTHING: TECHNOLOGY DRIVING PERFORMANCE



DRY CONTACT PLUS TECHNOLOGY

The tire's contact patch adapts to driving style for **IMPROVED GRIP AND REACTIVITY**, enhancing performance*



WET BRAKING PRO TECHNOLOGY

New resin system allows the tire to have more micro-contact with the road surface, giving drivers **BETTER GRIP ON WET ROADS***



EV READY

Lower noise emissions and reduced rolling resistance* make the tire a **PERFECT FIT FOR ELECTRIC VEHICLES**



*compared to predecessor Eagle F1 Asymmetric 5

Caption:

Description:

Dimensions: 2000 x 2500

aperture: 0

credit:

camera:

caption:

created_timestamp: 0

copyright:

focal_length: 0

iso: 0

shutter_speed: 0

title:

orientation: 0

keywords: Array